



Aperio™ Technology

**ASSA ABLOY**

The global leader in  
door opening solutions



# Contents

<b>Introducing Aperio Technology</b>	<b>2</b>
<b>Aperio System Overview</b>	<b>3</b>
<b>Aperio System Components</b>	<b>4</b>
<b>Upgrading System Components</b>	<b>5</b>
<b>Simplified Management of Security</b>	<b>6</b>
<b>E100 Series Escutcheon</b>	<b>8</b>
<b>C100 Series Cylinder</b>	<b>10</b>
<b>RS485 Communication Hub</b>	<b>12</b>
<b>USB Radio Dongle</b>	<b>13</b>
<b>Aperio Programming Application</b>	<b>13</b>



# Introducing Aperio™ Technology

Aperio is a new technology developed to complement new and existing electronic access control systems, providing end users with a simple, intelligent way to upgrade the controllability and security level of their premises.

The heart of Aperio is a short distance wireless communication protocol; designed to link an online electronic access control system with an Aperio enabled mechanical lock.

## Key Benefits

### **Affordable online door control of internal doors**

- Few components
- Very easy installation
- No changes to existing access control installation

### **Extends existing access control system**

- Connects over standard interface
- No separate management software – uses existing access control system management software
- No change of cards

### **Enhances security for internal doors**

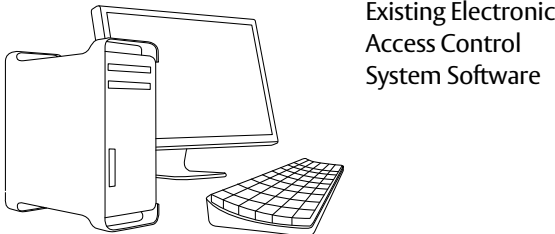
- Eliminates key management issues
- Authorization changes in real time
- Encrypted communication
- Audit trails and time zones through existing system

***“Wireless Locking Evolution for On-line Door Control”***

# Aperio System Overview



The open architecture of Aperio provides a convenient way of connecting with most access control systems via a standard RS485 Interface. Cylinders or escutcheons communicate via an encrypted wireless link to a communication hub that is wired directly to the existing system.



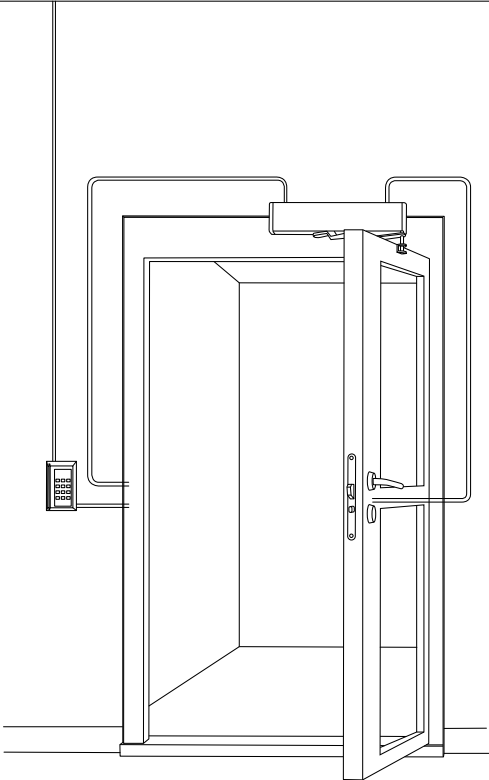
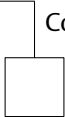
Existing Electronic Access Control System Software

Existing Electronic Access Control Panel

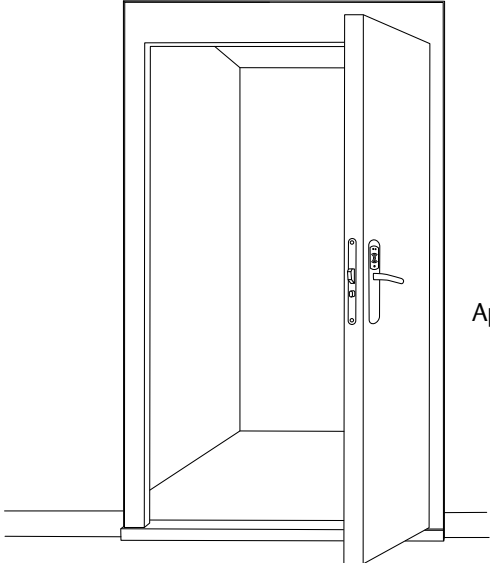


RS485

Communication Hub



Wired access control door



Aperio enabled door

Aperio Lock

# Aperio System Components

## E100 Series Escutcheon

The E100 series escutcheon is designed to fit Lockwood mechanical 3570 series mortice locks. In addition to card access the external side of the door provides for key override entry, whilst the inside lever is designed for emergency egress.

## C100 Series Cylinder

Designed to fit the standard Lockwood oval 570 series cylinder, the C100 provides a unique and cost effective migration to an on line electronic access control door.

## Communication Hub

The Communication Hub is the link between Aperio locks and the existing access control system. The Hub has a standard RS485 connection, making it compatible with most systems on the market today.

## Programming Application

The Aperio programming Application is the software tool used to set up and programme Aperio based products.

## USB Radio Dongle

The Radio Dongle is used in conjunction with the programming application. It communicates via an encrypted wireless link directly to the Hub and Aperio enabled lock.



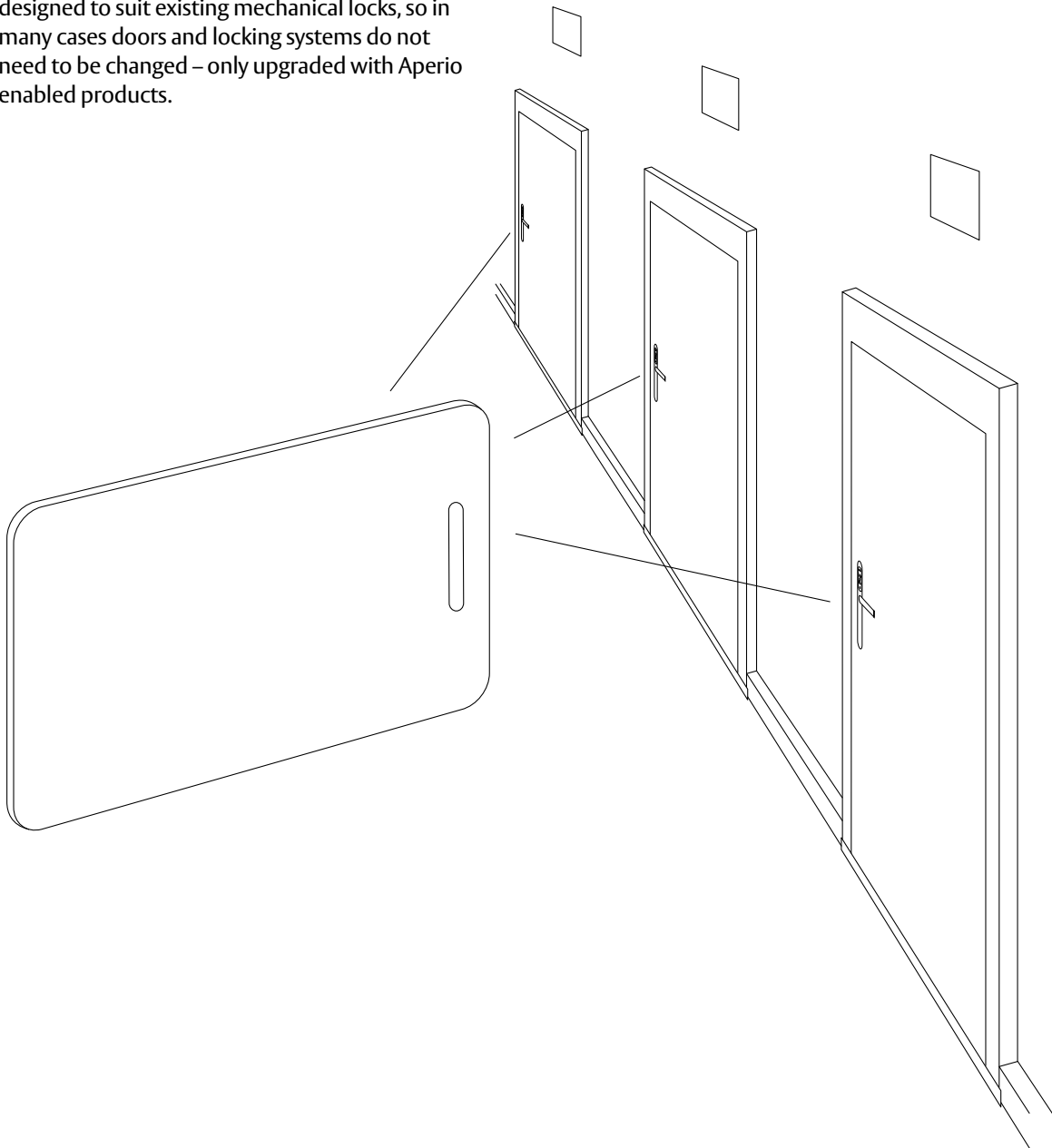
# Upgrading Existing Systems



Expanding an electronic access control system with Aperio is more cost effective than alternative solutions because it is easy to install and does not require any wiring of the door.

Being compatible with most RFID technologies, there is no need to change user's credentials – just use existing cards.

Electronic cylinders and escutcheons have been designed to suit existing mechanical locks, so in many cases doors and locking systems do not need to be changed – only upgraded with Aperio enabled products.

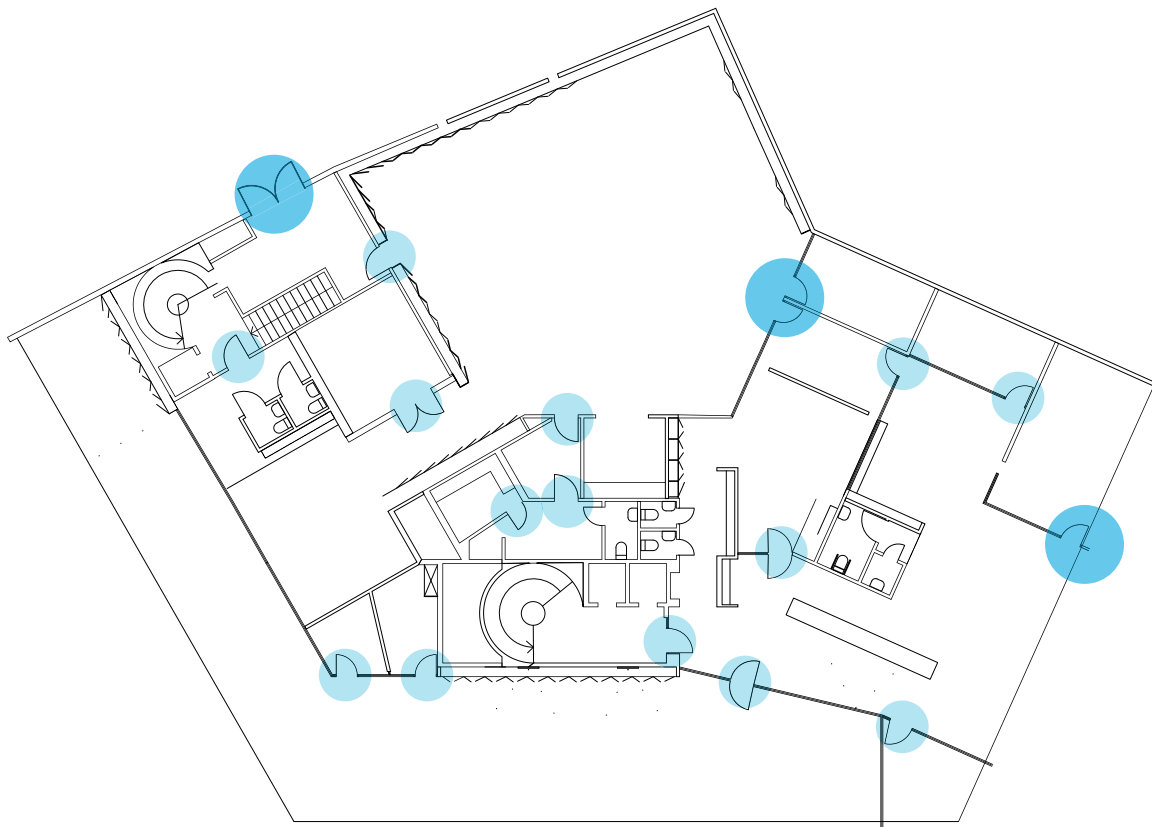


# Simplified Management of Security

Installing Aperio provides a simple way to facilitate card-based access, while also fulfilling end-users needs for an easily operated system.

Aperio enabled products are managed with existing electronic access control systems and management software. This means that all decisions and updates are in real time. This offers a high level of security and control over audit trails, usage, and adding/deleting users.

Any number of doors can be wirelessly connected to the access control system through Aperio technology, providing a cost effective solution to upgrade internal mechanical doors to online access control.



- Wired access control door
- Aperio enabled door





# E100 Series Escutcheon

## General Description

The E100 series escutcheon is designed to fit Lockwood mechanical 3570 series mortice locks & provide a cost effective migration to an on line electronic access control door. In addition to card access the external side of the door provides for key override entry, whilst the inside lever is designed for emergency egress.

The external plate incorporates a sophisticated battery powered proximity reader that communicates wirelessly to a hub. The Hub is then wired directly to the access control system and enables standard on line access control functionality at significantly reduced costs to that of a hard wired door.

## Key Features

- Wireless on line access control
- Authorisation changes in real time
- Audit trails and time zones managed through existing system
- Compatible with Lockwood 3570 series mechanical mortice locks
- Additional Key Override
- Emergency egress
- Lock can store up to 10 override credentials/prox cards
- Store last 200 events and audit trails locally in the lock
- Battery powered – up to 40,000 operations
- LED status
- Battery low warning sent to EAC system

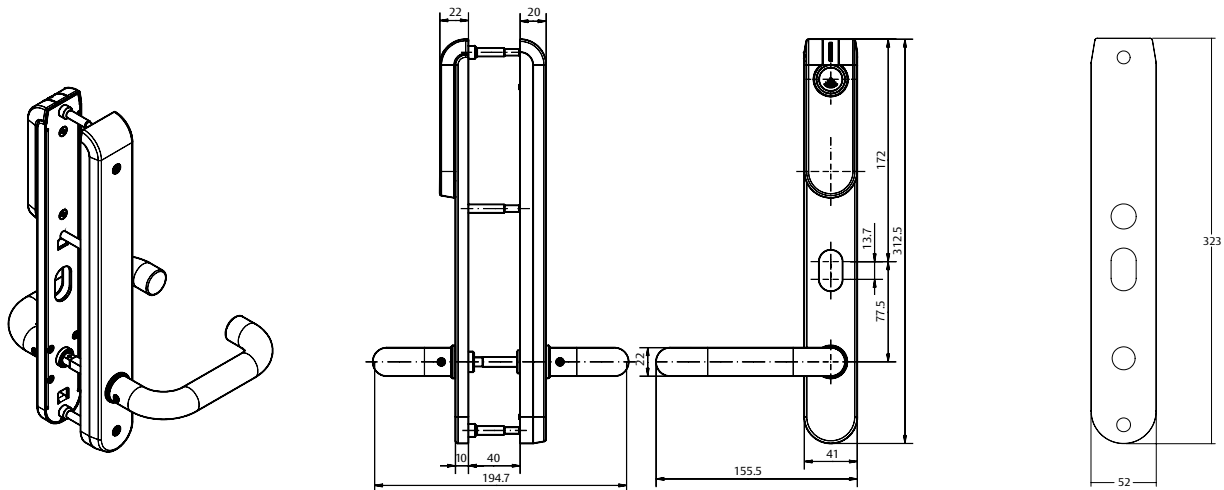
## Applications

- Internal doors only
- Retro fit mechanical mortice locks
- Expand existing access control installations
- New access control installations
- Doors that cant be hard wired
- Heritage listed buildings



## Function

- **External** lever is always locked. To unlock badge card and activate lever. Door automatically re locks after set time. Can also be opened via Key override.
- **Internal** lever is set to escape – free egress at all times.



E100 cover plate

## E100 Technical Information

<b>Battery type</b>	1 x Lithium CR123A
<b>Battery life time</b>	>40,000 cycles
<b>Radio standard</b>	IEEE 802.15.4 (2.4GHz)
<b>Encryption</b>	AES128 Bit
<b>Wireless range</b>	5m – same side of wall
<b>RFID technology**</b>	Mifare Classic iCLASS
<b>RFID Reading</b>	UID / sector / block
<b>Card read range</b>	< 4cm
<b>Operating temperature</b>	0°C – 60°C
<b>Humidity</b>	< 85% non condensating
<b>IP-degree</b>	IP30
<b>Approvals</b>	CE
<b>Colour</b>	Brushed stainless steel
<b>Override cylinder</b>	Lockwood Australian oval 570 series
<b>Door Thickness</b>	35-45mm & 46-55mm
<b>Spindles</b>	7.6mm
<b>Backset</b>	60mm

## Ordering Information

Product Description	Part Number
E100 RS485 Hub Mifare 35-45mm door	E100MU1SS1/485
E100 RS485 Hub Mifare 46-55mm door	E100MU1SS2/485
E100 RS485 Hub iCLASS 35-45mm door	E102IU1SS1/485
E100 RS485 Hub iCLASS 46-55mm door	E102IU1SS2/485

**Notes:**

- iCLASS reader format not available at time of print.

## Accessories

Product Description	Part Number
E100 Cover Plate – Pair	E100-PL2SSS
3572 series mortice lock to suit E100 series	3572SCNOHD

**Notes:**

- E100 cover plate is used only if required when retro fitting existing door furniture.
- Each cover plate is 1.2mm thick. A total of 2.4mm should be added to door thickness if using these plates

# C100 Series Cylinder

## General Description

Designed to fit the standard Lockwood oval 570 series cylinder, the C100 provides a unique and cost effective migration to an on line electronic access control door.

The external housing contains a sophisticated battery powered proximity reader that communicates wirelessly to a hub. The hub is then wired directly to the access control system and enables standard on line access control features at significantly reduced costs than that of a hard wired door.

## Key Features

- Wireless On line access control
- Authorisation changes in real time
- Audit trails and time zones managed through existing system
- Compatible with standard Lockwood 3570 series mortice locks
- Cylinder can store up to 10 override credentials/prox cards
- Stores last 200 events and audit trails locally in the cylinder
- LED status indication
- Battery powered 40,000 operations
- Battery low warning sent to EAC system

## Applications

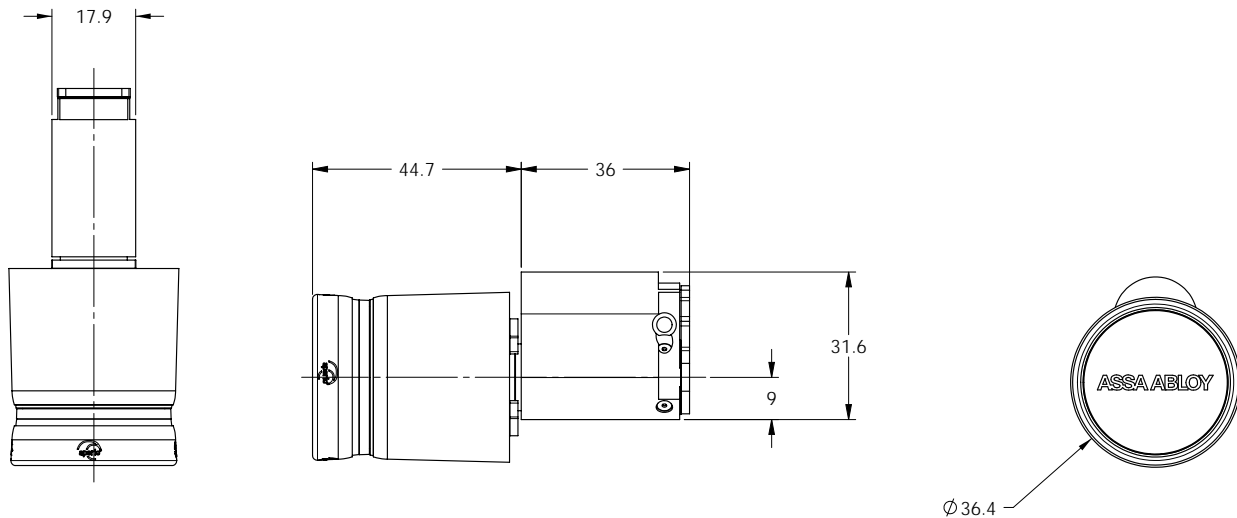
- Internal doors only
- Expand existing access control systems
- New access control installations
- Doors that cant be hard wired
- Heritage listed buildings



## Function

- **External** – badge card in front of cylinder and rotate knob to retract latch.
- **Internal** – lever on mortice lock is set to escape – free egress at all times.

# C100 Series Cylinder



## C100 Technical Information

<b>Battery type</b>	1 x Lithium CR2
<b>Battery lifetime</b>	>40,000 cycles
<b>Radio standard</b>	IEEE 802.15.4 (2.4GHz)
<b>Encryption</b>	AES 128 Bit
<b>Wireless range: Cylinder to Hub</b>	5m – same side of wall
<b>RFID technology</b>	Mifare Classic iCLASS
<b>RFID reading</b>	UID / sector / block
<b>Card reading range</b>	< 4cm
<b>Operating temperature</b>	0°C - 60°
<b>Humidity</b>	< 85% non condensation
<b>IP-degree</b>	IP 30
<b>Knob colour</b>	Black
<b>Cylinder Colour</b>	Satin Chrome. Other finishes on application
<b>Cylinder format</b>	Lockwood Australian oval 570 series
<b>Door thickness</b>	Suits standard doors up to 50mm
<b>Approvals</b>	CE

## Ordering Information

Product Description	Part Number
C100 cylinder & RS485 Hub Mifare	C100MASC/485
C100 cylinder & RS485 Hub iCLASS	C102IASC/485

# RS485 Communication Hub

## General Description

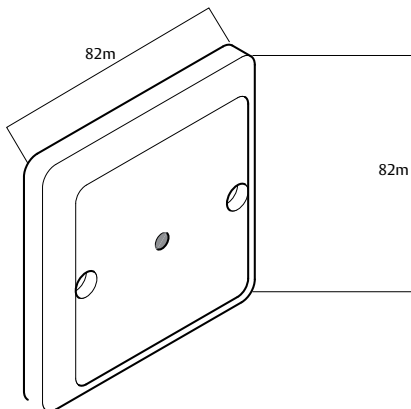
The Communication Hub is the link between Aperio locks and the existing access control system. The Hub has a standard RS485 connection, making it compatible with most systems on the market today. It communicates directly with Aperio enabled locks via an encrypted 2.4GHz wireless link, and is designed to be positioned above the door within approximately 5m of the lock.

## Key Features

- RS485 interface
- Encrypted radio communication
- Integrated antenna
- LED status for visual indication
- Hub/Aperio Lock supplied paired 1:1

## Applications

- Internal doors only
- Expand existing access control systems
- New access control installations
- Doors that cant be hard wired



## RS485 Communication Hub Technical Information

<b>Power</b>	5-30Vdc
<b>Power consumption</b>	15mA
<b>Radio standard</b>	IEEE 802.15.4 (2.4GHz)
<b>Encryption</b>	AES 128 Bit
<b>Range between lock/Hub</b>	5M/same side of the wall
<b>Operating temperature</b>	0°C - 60°
<b>Humidity</b>	< 85% non condensation
<b>IP-degree</b>	IP 30
<b>Approvals</b>	CE

## General Description

The Aperio Programming Application is the software tool used to set up and programme Aperio based products.

Using the software the installer simply plugs in the USB radio dongle to the PC to communicate directly to the Aperio lock via the Communication Hub.

The software has an encrypted installation data base that can be used to manage any number of sites.

## Key Features

### Software

- Multilingual installation tool
- Encrypted installation database
- Installation management:
  - Unit configuration
  - Firmware update
  - Pair/Un-pair
  - Override credentials
  - Wireless status link
  - RS485 settings

### Radio Dongle

- Provides communication to Aperio based products
- Encrypted radio communication

## Applications

- Tools designed for the installer to set up and programme Aperio based products



## Ordering Information

Product Description	Part Number
Software and USB Dongle	APRD1/PAP1

ASSA ABLOY is the global leader in door opening solutions, dedicated to satisfying end-user needs for security, safety and convenience.

ASSA ABLOY is represented in all major regions, in both mature and emerging markets, with leading positions in Australia, Europe and North America.

As the world's leading lock group, ASSA ABLOY offers a more complete product range of door opening solutions than any other company on the market.

**Head Office**

ASSA ABLOY Australia Pty Limited  
235 Huntingdale Road, Oakleigh  
Victoria, 3166 Australia

1300 LOCK UP (1300 562 587)  
info.au@assaabloy.com  
assaabloy.com.au

